

Mrs. Hoffman Honors Biology A

Email: Kelly_K_Hoffman@mcpsmd.org

Room: 3054

2018 – 2019



See Upcoming Assignments, Test/Quiz Review Websites, and Helpful Study Resources at
<http://www.yoloinbiology.com>

Welcome to Biology! This will be your introduction to the world around you and how it functions. Biology is a study of the fundamental principles of living organisms including both the physical and chemical properties of life, cellular organization and function, the transfer of energy through metabolic systems, cellular respiration, the classification of living organisms, and heredity. This is an inquiry-based class that will include a variety of hands-on activities and experiments that are tied to the Maryland State Biology Standards and Next Generation Science Standards.

UNITS OF STUDY: SEMESTER A

Unit	Summary
Interdependent Relationships in Ecosystems: Introduction to Biology & Ecology	Understanding biological organization, Characteristics of Life, Organism relationships, Biodiversity.
Matter and Energy in Organisms and Ecosystems: Energy and Cycles of Life	Cycles of Matter, Energy of Living Systems: Cellular Respiration & Photosynthesis.
Structure & Function: Chemistry of Life	Properties of important biological compounds, Macromolecules, Cellular components: cell structure & division.

CLASSROOM EXPECTATIONS

- **Be respectful.** Show respect to classmates, teachers, guests, and personal and school property.
- **Be responsible.** You are **always** responsible for your own actions. Never play with equipment or fool around in class. Follow safety protocol in the lab.
- **Be prepared. Be on time.** You are to have all of the necessary materials (pens/pencils, notebook, etc) before you arrive to class. Be in your assigned seat before the late bell rings.
- **Be productive and do your OWN work!!** Cheating and plagiarism will result in an automatic zero. Be involved in class discussions and activities.
- **Follow directions and speak at appropriate times.** No yelling or swearing.
- **Clean up your area.** Class will not be dismissed until the room is clean and materials are put away. Chairs are pushed in before leaving and put in their original spots as well as class materials.
- **Ask Questions!** If you don't ask, you'll never know!



GRADING POLICY

- The following is the grading scale for this class:

A: (89.5% - 100%)

B: (79.5% - 89.4%)

C: (69.5% - 79.4%)

D: (59.5% - 69.4%)

E: (0% - 59.4%)

* Late work will be deducted 10% daily until the deadline *

** Work not turned in by the **deadline date** will be recorded as a **zero** **



- Types of assessments:**

- o Quizzes and unit tests – every 2 - 3 weeks
- o Lab Investigations - biweekly
- o Homework – 3 - 4 times a week
- o Projects – at least one per quarter



- Weighting of Tasks and Assessments**

Summative Assessments: Tests and Projects	30%
Formative Assessments: Quizzes, Labs, and Classwork	60%
Homework: Checked for completion and accuracy.	10%

MAJOR ASSIGNMENTS:

- All assignments will be posted on the class website and updated on a regular basis. All due dates and information will be listed on the homepage under “Upcoming Due Dates” as well as in the “Weekly Blog.” All handouts, notes, and rubrics will also be posted.

ACADEMIC DISHONESTY:

- I have **ZERO** tolerance for cheating and copying assignments. Students found copying homework from another will receive a **ZERO** for that assignment. Students are allowed to work together but should write their own responses.

HOMEWORK

- Homework will be related to the curriculum and will be assigned to strengthen skills, reinforce concepts, and/or prepare for a lesson, unit, or activity.
- In this course, Homework will be (A) checked only for completion OR (B) evaluated for learning
- In accordance to MCPS policy, **no** additional assignments for extra credit will be considered.

LATE WORK AND/OR MISSING WORK:

- Each assignment will have a **due date**. This is the date by which you are expected to submit the assignment. Your grade will drop one letter grade if it is not turned in by the due date.
- The **deadline** is the last day an assignment will be accepted for a grade. Work not turned in by the deadline will be recorded in the grade book as a zero. While students may receive feedback on the task, they generally will not earn credit after the deadline has passed. **The deadline is a week after the unit test.**
- If a student is absent from class, that student is responsible for making up missed work.



RE-TEACHING AND REASSESSMENT

- Re-teaching occurs when teacher or student determines that the student is not meeting learning goals.
- Reassessment opportunities are identified by the teacher before the original task/assessment and will occur within an instructional unit.
- Teachers will provide reassessment opportunities for at least two (teacher-selected) formative tasks per marking period.
- All students may be reassessed on the selected formative tasks, regardless of original grade on tasks, if they meet the following requirements: completed the original tasks or assessment; completed required assignments, and completed re-teaching/relearning activities as determined by the teacher.
- When tasks are reassessed, they may be reassessments partially, entirely, or in a different format, and the reassessment grade replaces the original grade.

COMMUNICATION

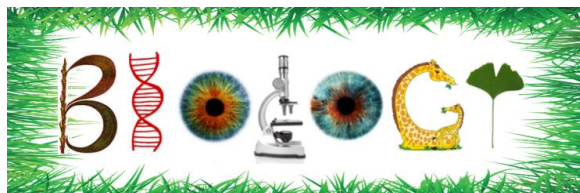
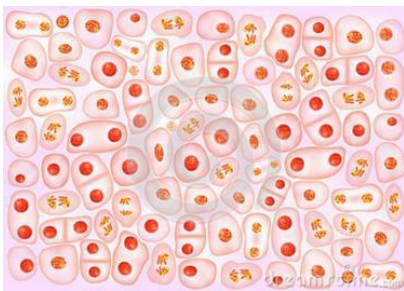
- Student Handbook/Planner
- Progress Reports/Interims/Report Cards
- myMCPS Classroom
- Email
- Biology website (<http://yoloinbiology.com>)

Please note codes that may appear in the gradebook:

- **X** stands for Exempt. This means the assignment does not count towards the student's grade, and the student does not need to make-up this assignment.
- **Z** stands for a Zero. This is used when an assignment has not been turned in by the Due Date, but can still be turned in, for partial credit, before the Deadline. If the assignment is not turned in by the Deadline, the teacher must convert the grade to a numeric zero (0) immediately after the deadline has passed.
- **o** stands for Zero. This is used when an assignment has not been submitted by the Deadline.

I hope that you find this class exciting and educational. I am available outside of class time for extra help.
Please ask for help whenever you need it!!
I look forward to a great year!

-Mrs. Hoffman-





DID YOU KNOW??

- There are 206 bones in the adult human body and there are 300 in children (some of the bones fuse together).
- Fleas can jump 130 times higher than their own height. In human terms this is equal to a 6ft. person jumping 780 ft. into the air.
- The most dangerous animal in the world is the common housefly. Because of their habits of visiting animal waste, they transmit more diseases than any other animal.
- The world's largest amphibian is the giant salamander. It can grow up to 5 ft. in length.
- The smallest bone in the human body is the stapes or stirrup bone located in the middle ear. It is approximately .11 inches (.28 cm) long.
- There are no poisonous snakes in Maine.
- The Stegosaurus dinosaur measured up to 30 feet (9.1 meters) long but had a brain the size of a walnut.
- Shrimp's hearts are in their heads. Starfish don't have brains. An ostrich's eye is bigger than its brain.
- Our eyes are always the same size from birth, but our nose and ears never stop growing.
- The blue whale can produce sounds up to 188 decibels. This is the loudest sound produced by a living animal and has been detected as far away as 530 miles.
- The temperature can be determined by counting the number of cricket chirps in fourteen seconds and adding 40.
- The ears of a cricket are located on the front legs, just below the knee.
- It takes approximately 12 hours for food to entirely digest.
- The longest living cells in the body are brain cells which can live an entire lifetime.
- No matter its size or thickness, no piece of paper can be folded in half more than 7 times.
- Our eyes are always the same size from birth, but our nose and ears never stop growing.
- The human eye blinks an average of 4,200,000 times a year.
- Human jaw muscles can generate a force of 200 pounds (90.8 kilograms) on the molars.
- The only letter not appearing on the Periodic Table is the letter "J".
- When glass breaks, the cracks move at speeds of up to 3,000 miles per hour.
- Diamonds are the hardest substance known to man.
- In your lifetime, you'll shed over 40 pounds of skin.
- Humans share 60% of DNA with a banana.
- When the queen of a clownfish school dies, a male clownfish changes its gender to become female and takes her place.
- The Horseshoe crab has blue blood.

