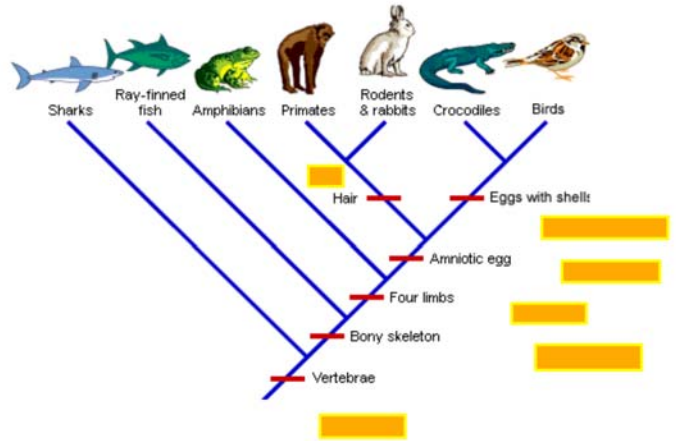
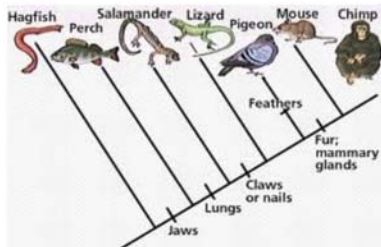
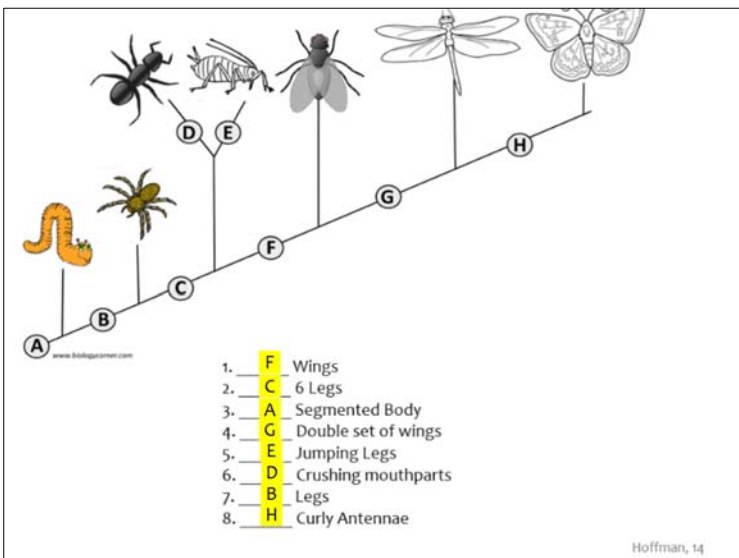


## Cladograms

- Organisms are categorized by similarities
- Common ancestors are related
- They share similar DNA



Which organisms are the closest related organisms?



Hoffman, 14

### PART II - Create Your Own Cladogram

To make a cladogram, you must first look at the animals you are studying and establish characteristics that they share and ones that are unique to each group. For the animals on the table, indicate whether the characteristic is present or not. Based on that chart, create a cladogram like the one pictured above.

	Cells	Backbone	Legs	Hair	Opposable Thumbs
Slug	X				
Catfish	X	X			
Frog	X	X	X		
Tiger	X	X	X	X	
Human	X	X	X	X	X

DRAWING OF YOUR CLADOGAM: