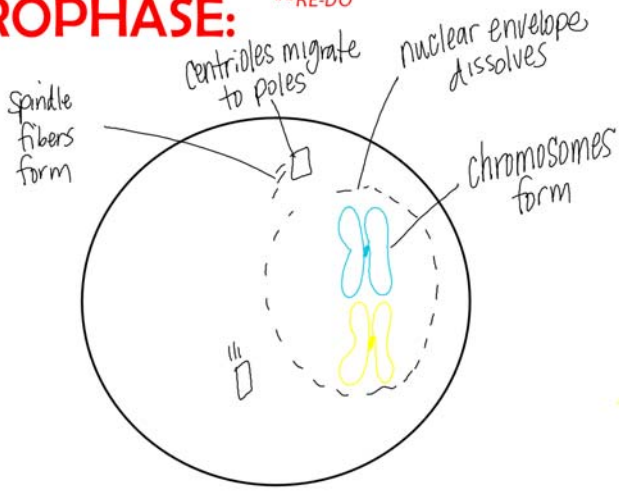


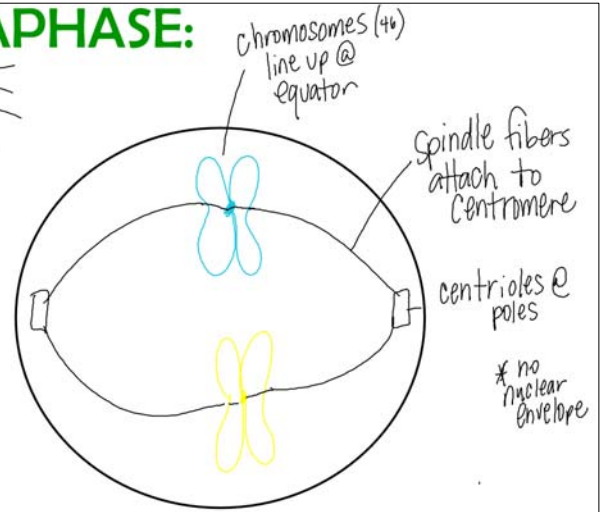
# PROPHASE:

\*\*RE-DO



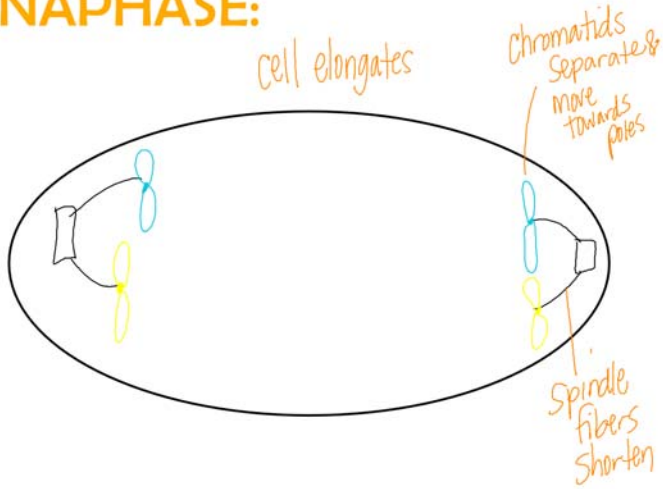
# METAPHASE:

middle



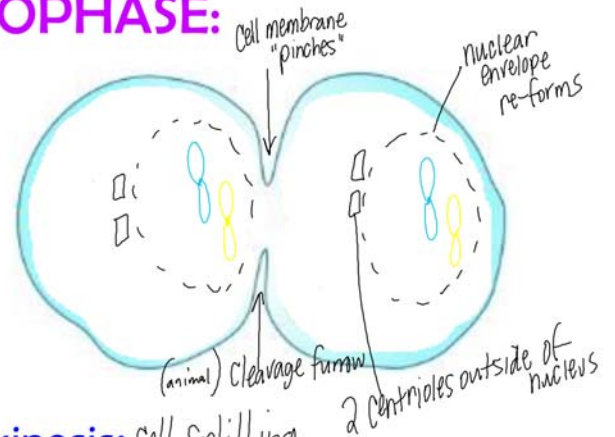
# ANAPHASE:

cell elongates

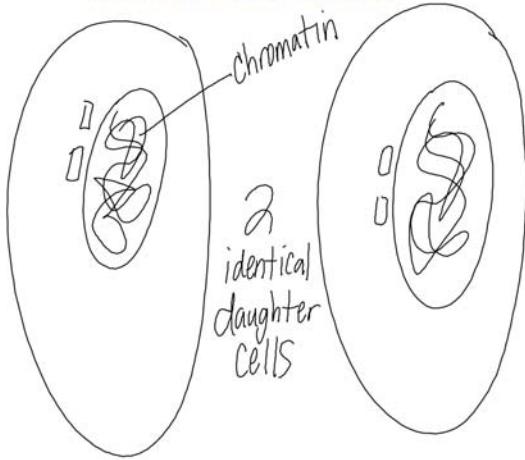


# TELOPHASE:

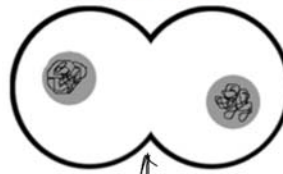
Cytokinesis: Cell splitting cytoplasm



**FINAL PRODUCT:**

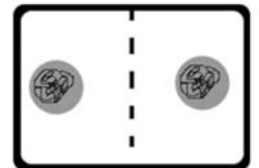


**Animal Cell**



Cleavage furrow

**Plant Cell**



cell plate

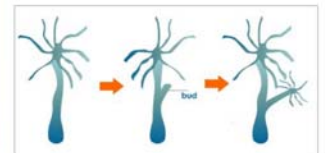
What type of cells go through mitosis?

Do all cells go through mitosis? Why or Why not?

**Not all Cells reproduce by Mitosis!**

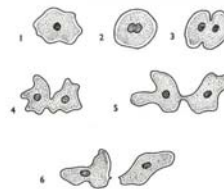
**Budding**

Ex: spirogyra



**Binary Fission**

Ex: bacteria



# Conjugation

Ex: bacteria

